

Energy
Company

Baby Center

Law Firm

Office Tower



Architectural Woodwork Institute

design

solutions

Spring 2017 | \$6.25

Completed in 1984, 1155 Avenue of the Americas in New York City is a truly unique structure, with black granite adorning the entire exterior and the two-story lobby. Plus, there is a flat window line all around the building that provides sweeping views of the city. The dramatic lobby features terrazzo floors as well as marble and granite walls.



Granite Tower.

New York City Office Building Lobby Clad in White Oak



Close in proximity to Bryant Park, the front entrance to the 42-story building is prominently placed on Avenue of the Americas. This granite tower of approximately 610,000 square feet of rental space occupies the western block front between 44th and 45th Streets.

It is owned by the Durst organization, a family-run business, that develops, builds and manages premier office towers and residential buildings. In 2002, anticipating the green building revolution, the Dursts supplemented conventional cooling systems in the building with an innovative ice storage system. Each night the system produces over 30,000 gallons of ice to cool the building throughout the following day.

A \$90 million capital improvement program for 1155 commenced in the fall of 2015. It was handled by Studios Architecture, New York City. Architectural woodwork for the quality-certified renovation project was fabricated and installed by Corporate Woodworking, an AWI member firm located in Fairfield, New Jersey.

Woodwork elements included wall paneling and doors in the lobby and the security desk. Other upgrades included a newly appointed entrance on West 44th Street featuring seating and a landscaped plaza, new retail, re-glazing and a new rooftop addition.

“Pride in Performance is the culture surrounding our dedicated and experienced team of woodworking professionals and we take great pride in delivering both the best products and best experiences to our clients.”

– Dennis Drew
Project Manager

The Paneling

To serve a modern clientele, “the aesthetic is purposefully dramatic, emphasizing contrast with the existing finishes and providing a varied material palette that ranges from the modern wood panels to the side-lit terrazzo wall panels,” explains Robert Clemens, AIA NCARB of Studios Architecture.

The wood paneling is fabricated of European White Oak veneer that was random matched with random width leaves in each panel, reports Dennis Drew of Corporate Woodworking. “The grain was horizontal so panels were stack matched to each other,” he explains.





at a
glance

AWI MANUFACTURING
MEMBER:

**Corporate
Woodworking**

LOCATION:

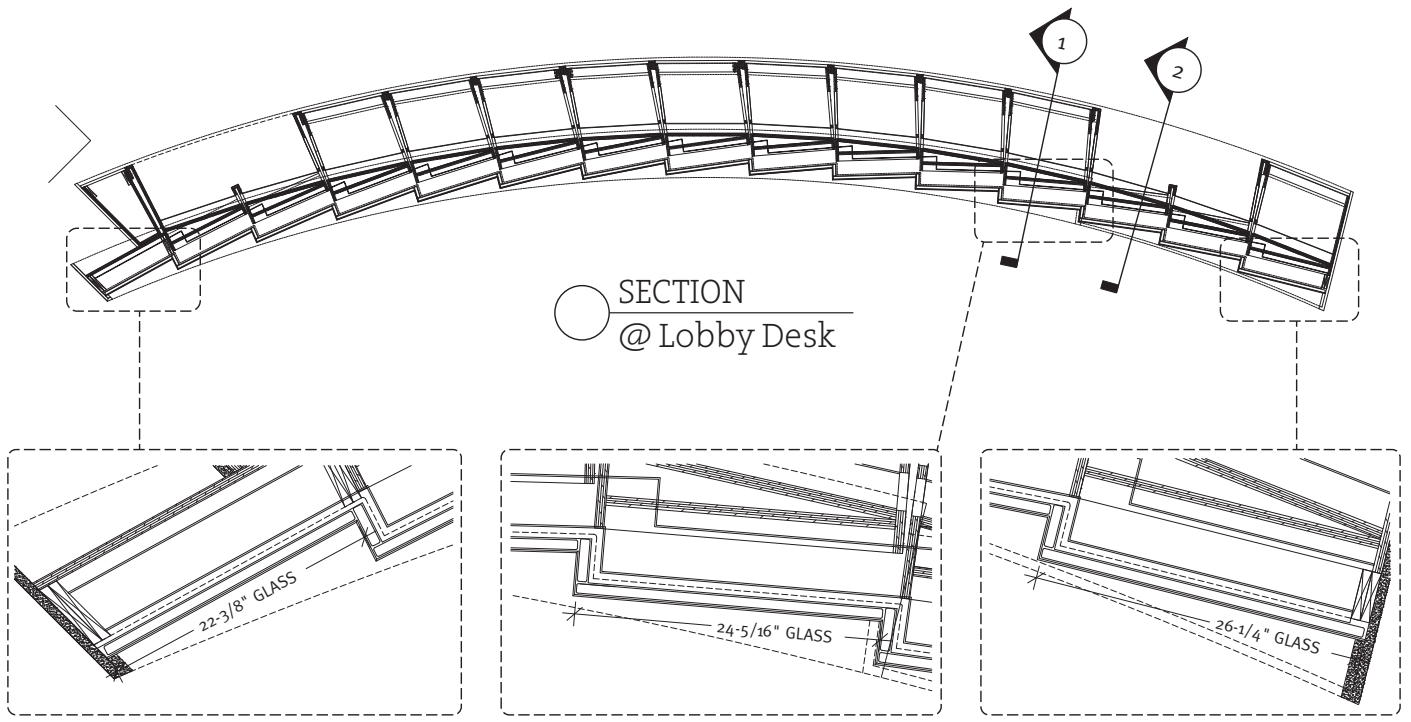
Fairfield, New Jersey

ESTABLISHED:

1989

FACILITY:

30,000 square feet





WALNUT

B3

A6
A5

A3
A2
A1

B1

B2

B1
★1

B2
★1



11-41

210

C1

C2

C3

C4

C5



The veneer was supplied by Interwood Forest Products, an AWI supplier member from Shelbyville, Kentucky. “Interwood sourced this log from Slovenia where more than half the country is covered by naturally diverse, old growth forests,” notes Brooke Roberson.

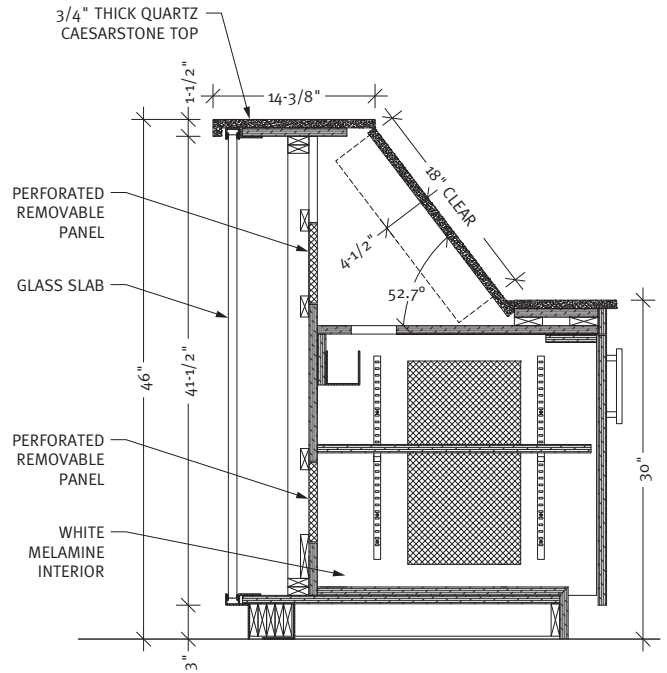
“High altitudes and mountainous terrain protect these forests from being developed for agricultural use. This means little to no disturbance in the growth cycle of the tree allowing for superb growth rings and consistent grain structure. Slovenian Oak has long been the wood of choice for Italian furniture producers precisely due to its straight grain and sturdiness,” Roberson continues.

The FSC certified veneer “provided the simplicity and excellent qualities and exquisite detailing for which we were looking,” adds Clemens. “The panels are flush and all the hardware, like the destination dispatch portals for the elevators, are concealed behind matching flush veneer panels. The detailing, laying out and finishing were all done with beautiful precision and excellent quality.”

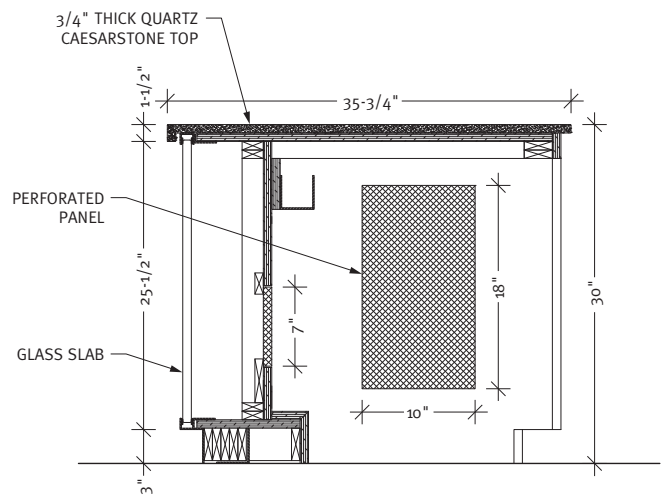
The Team

“Our knowledge, care and effort helped in meeting all budgeting and scheduling objectives,” says Drew. “We were always treated as part of the team, assisting in achieving the design intent.”

From the initial concept to the final installation, Corporate Woodworking was “an excellent partner,” summarizes Clemens. 🌍



1 VERTICAL SECTION @ Lobby Desk



2 VERTICAL SECTION @ Lobby Desk

PROJECT:
1155 Avenue of
the Americas
New York, NY

PROJECT OWNER:
The Durst
Organization
New York, NY

WOODWORKER:
Corporate
Woodworking
Fairfield, NJ

ARCHITECT:
Studios
Architecture
New York, NY

VENEER SUPPLIER:
Interwood Forest
Products
Shelbyville, KY

**GENERAL
CONTRACTOR:**
Plaza
Construction
New York, NY

PHOTOGRAPHER:
Jeremy Frechette
New York, NY